



RICH STEEL (INDIA)

STOCKLIST & SUPPLIER ALL KIND OF INDUSTRIAL RAW MATERIAL



RICH STEEL

Exporting Strength, Building Global Trust

GSTIN NO. 27AATHS7942E3ZG



MFG, STOCKIST & SUPPLIER OF:

FERROUS & NON FERROUS METALS, Stainless Steel Pipe, Sheet Plate, Circle, Rods, Flangs, Pipe Fitting, Dairy Fittings, Forged Fittings, Alloy Steel, Carbon Steel, Monel, Inconel, Incoloy, Hastelloy, Duplex, Super Duplex, S.S Pipe Fitting, Nipple, Coupling, Flanges, Tee, Reducer, Elbow, & ALL Types of Industrial Raw Materials.

Specialists In: With a strong presence in both Global Export markets and the Domestic Market, we are committed to delivering high-quality industrial raw materials, ensuring reliability, competitive pricing, and timely delivery to meet diverse industry requirements.

Address : Shop no. 3, (Upper) Patel Mansion, 4th Kumbharwada Corner, 210, S.V Road, Mumbai - 400004



Satish Bhansali: 9137363538
Sadhana Jadhav: 8850781615



sales@richsteelsindia.com



www.richsteelsindia.com



Office Telephone: 022 66109667



RICH STEEL (INDIA)

STOCKLIST & SUPPLIER ALL KIND OF INDUSTRIAL RAW MATERIAL



APPLICATION AREAS

We offer a wide range of Industrial Products which is used in various industries. Such as :

- Sugar Industries
- Chemical Industries
- Fertilizer Plants
- Pharmaceutical Industries
- Oil & Gas Industries
- Automotive Industries
- Pulp & Paper Mills
- Heatexchanges
- Agriculture Machine Equipment
- Cement industry machinery
- Fire and safety industry
- Energy Industries
- Construction Industries

ABOUT US

Rich Steel India, based in Mumbai, is a trusted name in the steel and metal industry. We specialize in trading and manufacturing high-quality steel products to meet diverse industrial needs.

With a strong foundation, advanced facilities, and years of experience, we have grown into a reliable global supplier. Our products are designed to perform under tough conditions like high pressure, extreme temperatures, and cryogenic environments.

We serve industries such as Oil & Gas, Power Generation, Water Treatment, Petrochemicals, Shipbuilding, and more. Our customer-first approach and focus on quality ensure we deliver the best solutions for every project.

At Rich Steel India, we aim to provide dependable products and services, combining efficient logistics with expert knowledge. We are committed to being your trusted partner in the steel industry.



+91 9137363538 / 8850781615



www.richsteelsindia.com



sales@richsteelsindia.com



RICH STEEL (INDIA)

STOCKLIST & SUPPLIER ALL KIND OF INDUSTRIAL RAW MATERIAL



STAINLESS STEEL PIPES & TUBES

Stainless Steel

ASTM/ASME SA 312 GR. TP 304, 304L, 304H, 309S, 309H, 310S, 310H, 316, 316H, 316LN, 317, 317L, 321, 321H, 347, 347H, 904L.

ASTM/ASME SA 358 CL 1 & CL 3 GR. 304, 304L, 304H, 309S, 309H, 310S, 310H, 316, 316T1, 316H, 321, 321H, 347, 347H.

Alloy Steel

ASTM/ASME A 335 GR P1, P5, P9, P11, P12, P22, P23, P91

Nickel Alloy

ASTM/ASME SB 161/B725/B730 UNS 2200 (NICKEL 200)
ASTM/ASME SB 161/B725/B730 UNS 2201 (NICKEL 201)
ASTM/ASME SB 165/B725/B730 UNS 4400 (MONEL 400)
ASTM/ASME SB 729/B464/B468 UNS 8020 (ALLOY 20/20 CB 3)
ASTM/ASME SB 423/B705/B704 UNS 8875 (INCONEL 825)
ASTM/ASME SB 167/B517/B516 UNS 6600 (INCONEL 600)
ASTM/ASME SB 407/B514/B515 UNS 8810/8811 (INCONEL 800/HT)
ASTM/ASME SB 444/B705/B704 UNS 6625 (INCONEL 625)
ASTM/ASME SB 622/B619/B622 UNS 10276 (HASTELLOY C276)

Duplex Steel

ASTM/ASME SA 790 UNS NO: 31803/32760

Carbon Steel

ASTM/ASME A 53 GR. A & B, ASTM A 106 GR. A, B & C, API 5L GR. B, API 5L X 42, X 46, X 52, X 60, X 65 & X 70, ASTM/ASME A 691 GR. A, B & C

ANSI B 36.19 Stainless Steel Pipe Dimension in MM & Weight Per Kg

Normal Pipe Size		Outside Diameter	Schedule 5 S		Schedule 10 S		Schedule 20 S		Schedule 40 S		Schedule 80 S		Schedule 160 S		XXS	
mm	inch	mm	Wt. mm	Wt. Kg/m	Wt. mm	Wt. Kg/m	Wt. mm	Wt. Kg/m	Wt. mm	Wt. Kg/m	Wt. mm	Wt. Kg/m	Wt. mm	Wt. Kg/m	Wt. mm	Wt. Kg/m
3	1/8	10.3	1.2	0.260	1.24	0.260	1.5	0.33	1.73	0.370	2.41	0.475	-	-	-	-
6	1/4	13.7	1.2	0.370	1.65	0.498	2.00	0.58	2.24	0.643	3.02	0.808	-	-	-	-
10	3/8	17.1	1.2	0.470	1.65	0.640	2.00	0.74	2.31	0.857	3.02	1.116	-	-	-	-
15	1/2	21.3	1.65	0.812	2.11	1.014	2.30	1.07	2.77	1.286	3.73	1.642	4.78	1.94	7.74	2.55
20	3/4	26.7	1.65	1.032	2.11	1.300	2.55	1.52	2.87	1.708	3.91	2.225	5.56	2.90	7.82	5.45
25	1	33.4	1.65	1.310	2.77	2.121	2.55	1.94	3.38	2.537	4.55	3.282	6.35	4.24	9.09	3.64
32	1 1/4	42.2	1.65	1.671	2.77	2.728	3.00	2.90	3.56	3.435	4.85	4.524	6.35	5.61	9.70	7.77
40	1 1/2	48.3	1.65	1.923	2.77	3.150	3.00	3.35	3.68	4.101	5.08	5.484	7.14	7.25	10.15	9.55
50	2	60.3	1.65	2.421	2.77	3.986	3.00	4.24	3.91	5.515	5.54	7.588	8.74	11.11	11.07	13.44
65	2 1/2	73	2.11	3.741	3.05	5.336	4.00	6.81	5.16	8.756	7.01	11.570	9.53	14.91	14.02	20.39
80	3	88.9	2.11	4.578	3.05	6.546	4.00	8.37	5.49	11.448	7.62	15.484	11.1	21.30	15.24	27.68
100	4	114.3	2.11	5.918	3.05	8.483	4.50	12.18	6.02	16.296	8.56	22.628	13.49	33.54	17.12	41.03
125	5	141.3	2.77	9.593	3.40	11.721	5.00	16.80	6.55	22.065	9.53	31.364	15.88	49.11	19.05	57.43
150	6	168.3	2.77	11.461	3.40	14.014	6.35	25.36	7.11	28.648	10.97	43.142	18.25	67.53	21.95	79.22
200	8	219.1	2.77	14.979	3.76	20.240	6.35	33.31	8.18	43.129	12.7	65.526	23.01	111.27	22.23	107.92
250	10	273.1	3.40	22.920	4.19	28.164	6.35	41.77	9.27	61.131	12.7	82.661	28.58	172.33	25.40	155.15
300	12	323.8	3.96	31.669	4.57	36.477	6.35	49.7	9.53	74.810	12.7	98.790	33.32	238.68	25.40	186.90
350	14	355.6	3.96	34.340	4.78	41.923	7.92	67.90	11.13	95.84	19.5	160.28				
400	16	406.4	4.19	41.560	4.78	47.993	7.92	77.82	12.7	124.99						
450	18	457.2	4.19	46.810	4.78	54.064	7.92	87.74	14.27	157.26						
500	20	508	4.78	59.310	5.54	69.590	9.53	117.14	15.09	185.95						
600	24	610	5.54	82.570	6.35	94.520	9.53	141.11	17.48	255.41						

Formula - Pipe Weight Kg / Mtr OD - Thick x Thick x 0.02466 = Kg Per Mtr.

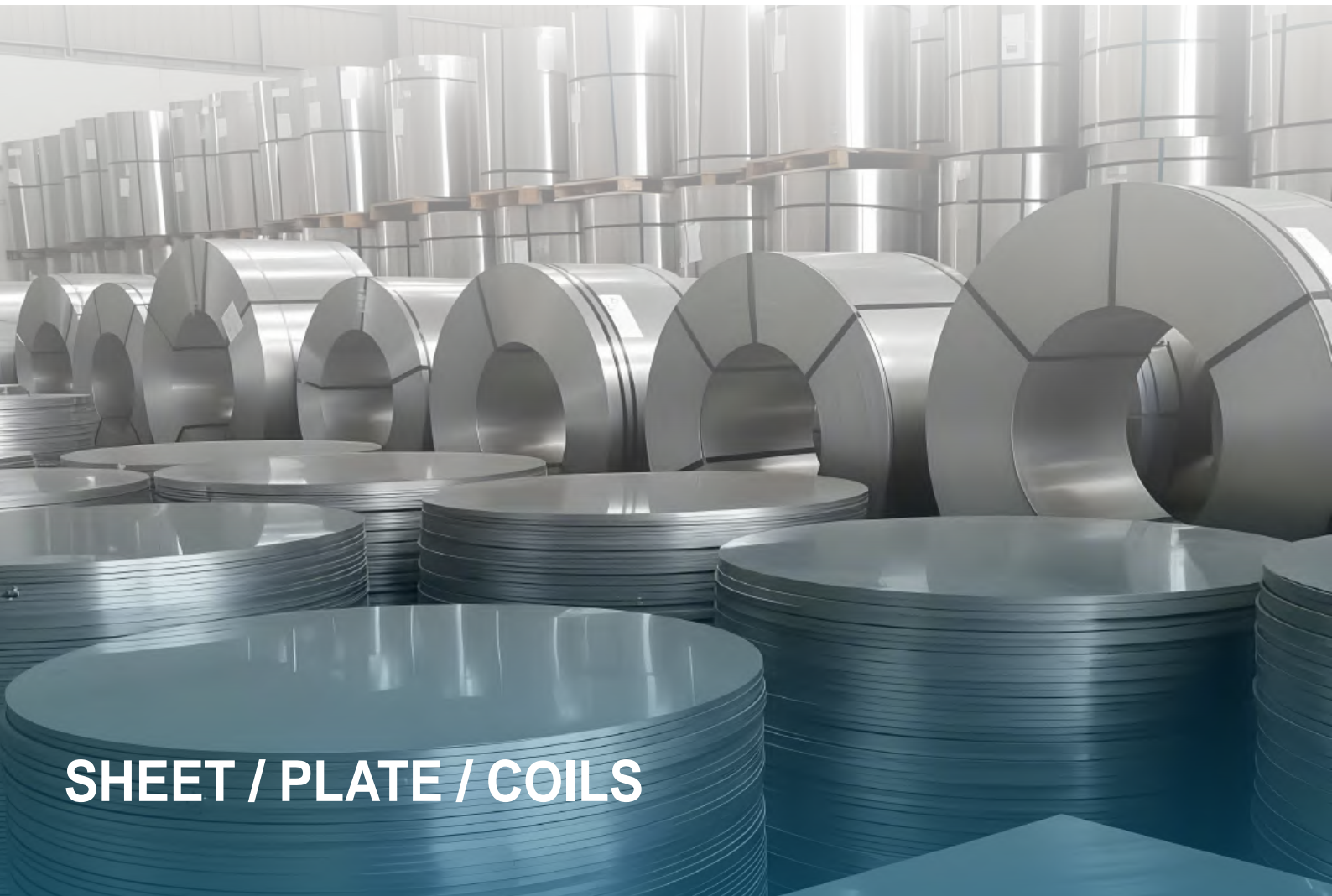
Chemical Composition & Mechanical Properties of S.S Pipe as per ASTM A 312

Chemical Composition %										Mechanical Properties, min						
Grade	C Max	Si Max	Mn Max	P Max	S Max	Ni	Cr	Mo	Others	Tensile (min)	Yield Point	Elongation%(GL: 2in or 1mm)			Hardness test mass	
												Full Section	Strip Specimen	Round Specimen	Birnel	Rockwell
304	0.08	1.00	2.00	0.045	0.03	8.0-11.0	18.0-20.0	-	-	75(515)	30(205)	35	35 56T+ 17.5D	28	192	B 90
304L	0.035	1.00	2.00	0.045	0.03	8.0-13.0	18.0-20.0	-	-	70(485)	25(170)	35	35 56T+ 17.5D	28	192	B 90
304H	0.04-0.10	1.00	2.00	0.045	0.03	8.0-11.0	18.0-20.0	-	-	75(515)	30(205)	35	35 56T+ 17.5D	28	192	B 90
316	0.08	1.00	2.00	0.045	0.03	11.0-14.0	16.0-18.0	2.0-3.0	-	75(515)	30(205)	35	35 56T+ 17.5D	28	192	B 90
316L	0.035	1.00	2.00	0.045	0.03	10.0-14.0	16.0-18.0	2.0-3.0	-	70(485)	25(170)	35	35 56T+ 17.5D	28	192	B 90
316H	0.04-0.10	1.00	2.00	0.045	0.03	11.0-14.0	16.0-18.0	2.0-3.0	Ti 5xC<0.70	75(515)	30(205)	35	35 56T+ 17.5D	28	192	B 90
316Ti	0.08	0.75	2.00	0.045	0.03	10.0-12.0	16.0-18.0	2.0-3.0	-	75(515)	30(205)	35	35 56T+ 17.5D	28	192	B 90
317L	0.035	1.00	2.00	0.045	0.03	11.0-15.0	18.0-20.0	3.0-4.0	-	75(515)	30(205)	35	35 56T+ 17.5D	28	192	B 90
309S	0.08	1.00	2.00	0.045	0.03	12.0-15.0	22.0-24.0	0.75	-	75(515)	30(205)	35	35 56T+ 17.5D	28	192	B 90
310S	0.08	1.00	2.00	0.045	0.03	19.0-22.0	24.0-26.0	0.75	-	75(515)	30(205)	35	35 56T+ 17.5D	28	192	B 90
310H	0.04-0.10	1.00	2.00	0.045	0.03	19.0-22.0	24.0-26.0	-	-	75(515)	30(205)	35	35 56T+ 17.5D	28	192	B 90
321	0.08	1.00	2.00	0.045	0.03	9.0-12.0	17.0-19.0	-	Ti 5xC<0.70	75(515)	30(205)	35	35 56T+ 17.5D	28	192	B 90
321H	0.04-0.10	1.00	2.00	0.045	0.03	9.0-12.0	17.0-19.0	-	Ti 5xC<0.60	75(515)	30(205)	35	35 56T+ 17.5D	28 17.50	192	B 90
347	0.08	1.00	2.00	0.045	0.03	9.0-13.0	17.0-19.0	-	Nb/Ta 10xC<1%	75(515)	30(205)	35	35 56T+ 17.5D	28 17.50	192	B 90
347H	0.04-0.10	1.00	2.00	0.045	0.03	9.0-13.0	17.0-19.0	-	Nb/Ta 8xC<10%	75(515)	30(205)	35	35 56T+ 17.5D	28 17.50	192	B 90



RICH STEEL (INDIA)

STOCKLIST & SUPPLIER ALL KIND OF INDUSTRIAL RAW MATERIAL



SHEET / PLATE / COILS

Stainless Steel

Plates as per ASTM A240, Gr. TP 304, 304L, 304LN, 309, 309S, 309H, 310H, 316, 316L, 316H, 316LN, 316Ti, 317, 317L, 321, 321H, 347, 347H, 409, 410, 420, 430 etc.

Nickel Alloy

ASTM/ASME SB 162 UNS 2200 (NICKEL 200),
ASTM/ASME SB 162 UNS 2201 (NICKEL 201),
ASTM/ASME SB 127 UNS 4400 (MONEL 400),
ASTM/ASME SB 463 UNS 8020 (ALLOY20/20 CB 3),
ASTM/ASME SB 424 UNS 8825 (INCONEL 825),
ASTM/ASME SB 168 UNS 6600 (INCONEL 600),
ASTM/ASME SB 409 UNS 8810/8811 (INCONEL 800/800HT),
ASTM/ASME SB 443 UNS 6625 (INCONEL 625),
ASTM/ASME SB 575 UNS 10276 (HASTELLOY C276)

Range

Thickness: 0.5 mm to 200 mm

Width: 1000 mm to 3000 mm

Length: 2500 mm to 12500 mm

Certification: Available with NACE MR 01-75

Alloy Steel Plates

As per ASTM A387 Gr. 2, 5, 9, 11, 12 & 22 in Class 1 & 2; ASTM A 204 Gr. A & B, DIN 17175 Gr. 15Mo3 & 16Mo3 with IBR Certificate.

Carbon Steel / Boiler Quality

As per IS 2062/ASTM A36, Gr. A, B & C; IS 2002

Gr. 1 & 2; ASTM A 516 Gr. 60 & 70



+91 9137363538 / 8850781615



www.richsteelsindia.com



sales@richsteelsindia.com



SUMMARY OF THE MAIN ASTM STANDARDS GENERALLY USED FOR SHEET & PLATES

ASTM	Grade	Chemical requirement percent (%)									Others	Tensile Strength mini-Mpa	Yield Strength mini-MPa	Elong mini	Hardness	
		C Max	Mn Max	P Max	S Max	Si Max	Ni	Cr.	Mo	Cu					Brinell	Rockwell
A240	304	0.08	2.00	0.045	0.030	0.75	8.00-10.5	18.00-20.0	-	-	-	515	205	40	201	92
	304L	0.03	2.00	0.045	0.030	0.75	8.00-12.0	18.00-20.0	-	-	-	485	170	40	201	92
	310	0.08	2.00	0.045	0.030	0.75	19.0-22.0	24.0-26.0	-	-	-	515	205	40	217	95
	316L	0.08	2.00	0.045	0.030	0.75	10.0-14.0	16.0-18.0	2.00-3.00	-	-	515	205	40	217	95
	316L	0.03	2.00	0.045	0.030	0.75	10.0-14.0	16.0-18.0	2.00-3.00	-	Ti>5xC<0.70	485	170	40	217	95
	317L	0.03	2.00	0.045	0.030	0.75	11.0-15.0	18.0-20.0	3.00-4.00	-	Cb+Ta>	515	205	40	217	95
	321	0.08	2.00	0.045	0.030	0.75	9.00-12.0	17.0-19.0	-	-	10xC<1.10	515	205	40	217	95
A515	347	0.08	2.00	0.045	0.030	0.75	9.00-13.0	17.0-19.0	-	-	-	515	205	40	201	92
	55	0.22	0.90	0.035	0.04	0.15-0.40	-	-	-	-	-	380-515	205	27		
	60	0.27	0.90	0.035	0.04	0.15-0.40	-	-	-	-	-	415-550	220	25		
	65	0.31	0.90	0.035	0.04	0.15-0.40	-	-	-	-	-	450-585	240	23		
A516	70	0.33	1.20	0.035	0.04	0.15-0.40	-	-	-	-	-	485-620	260	21		
	55	0.20	0.60-1.20	0.035	0.04	0.15-0.40	-	-	-	-	-	380-515	205	27		
	60	0.23	0.85-1.20	0.035	0.04	0.15-0.40	-	-	-	-	-	415-550	220	25		
	65	0.26	0.85-1.20	0.035	0.04	0.15-0.40	-	-	-	-	-	450-585	240	23		
A537	70	0.28	0.85-1.20	0.035	0.04	0.15-0.40	-	-	-	-	-	485-620	260	21		
	Class 1	0.24	0.70-1.35	0.035	0.040	0.15-0.40	-	0.80 max	0.35 max	-	-	485-620	345	22		
	Class 2	0.24	0.70-1.35	0.035	0.040	0.15-0.40	-	0.80 max	0.35 max	-	-	550-690	415	22		

Grade	Designation	% Chemical Composition						Tensile strength (Min) Kg/mm ²	Yield Strength (Min) Mpa			%EL.in gauge length 5.560So	Brand Test	Std. test Piece charpy V Notch Impact Energy Joule min
		C Max	Mn Max	S Max	P Max	Si Max	C.E. Max		<20min	<20-40 min	>40min			
A	FE410 WA	0.23	1.5	0.050	0.050	-	0.42	41.8	250	240	230	23	3t	-
B	FE410 WB	0.22	1.5	0.045	0.045	0.40	0.41	41.8	250	250	230	23	t<25 mm	2t for 27 3t for > 25mm
C	FE410 WC	0.20	1.5	0.040	0.040	0.40	0.36	41.8	250	250	230	23	2t	27

Designation	Chemical Composition				Tensile Test		Elongation	
	C Max	Si Max	P Max	S Max	Tensile Strength Mpa	Yield Strength Mpa	Test Piece	%min
IS 2002-1	0.18	0.10-0.35	0.040	0.040	362-442	590	5.650So 40So	26 30
IS 2002-2A	0.20	0.10-0.35	0.050	0.050	412-491	491	5.650So 40So	25 29
IS 2002-2B	0.22	0.10-0.35	0.050	0.050	510-608	491	5.650So 40So	20 24

SUMMARY OF THE MAIN ASTM STANDARDS GENERALLY USED FOR SHEET & PLATES

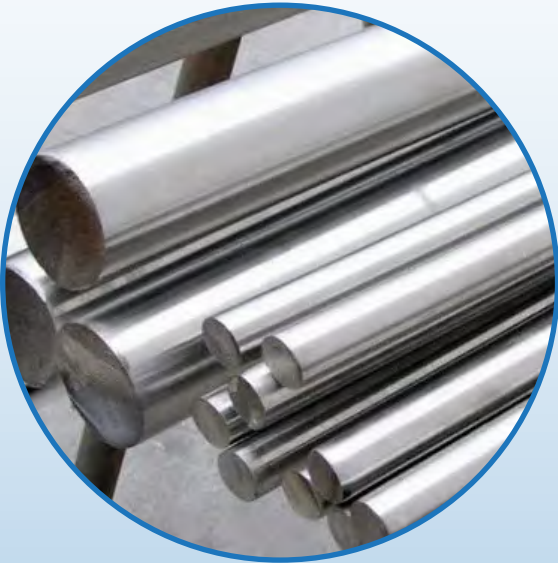
ASTM GRADE	C	Mn	Si	S	P	Cr	Ni	Other	Tensile (Mpa)	Yield (Mpa)	Elongation Strip/Round	Jutos.Av.MI	Redu.in Area. (%)
A350 LF1	0.30 max	1.35 max	0.15 0.30	0.040 max	0.035 max	0.30 max	0.40 max	Cu-0.4 max Cb-0.02 max Va-0.3 max	415-585	205	25	18/14 (-28.9)	38
A LF2	0.30 max	1.90 max	0.15 0.30	0.040 max	0.035 max	0.30 max	0.40 max	Cu-0.4 max Cb-0.02 max Va-0.3 max	485-655	205	30	20/16 (-45.6)	30
A LF3	0.20 max	1.35 max	0.20 0.35	0.040 max	0.035 max	0.30 max	3.25 3.75	Cu-0.4 max Cb-0.02 max Va-0.3 max	485-655	260	30	20/16 (-101.1)	35
A LF5	0.30 max	1.15 max	0.20 0.35	0.040 max	0.035 max	0.30 max	1.0 2.0	Cu-0.4 max Cb-0.02 max Va-0.3 max	CL-1 415-585 CL-2 485-655	CL-1 205 CL-2 260	CL-1 25 CL-2 30	20/16 (CL1&2-59.4)	CL 1.38 CL 2.35
A LF6	0.22 max	1.15 1.50	0.15 0.30	0.040 max	0.035 max	0.30 max	0.40 max	Cu-0.4 max Cb-0.02 max Va-0.4-0.11 Nit-0.01-0.03	CL-1 455-495 CL-2 515-655	CL-1 360 CL-2 415	CL-1 30 CL-2 28	CL.1 -20/16 CL.2 27/20 (CL.1&2-50)	40
A LF9	0.20 max	0.40 1.06	-	0.040 max	0.035 max	0.30 max	1.60 2.24	Cu-0.4 max Cb-0.02 max Va-0.3 max	(435-605)	315	28	18/14 (-73.3)	38

ASTM A 420/A 420M WROUGHT CARBON STEEL LOW-TEMPERATURE SERVICE PIPE FITTING

A 420 WPL -6	0.30 max	0.39 1.06	0.10 min	0.030 max	0.030 max	-	-	-	-	415-585	240	22	17.6/13.6 (-45)
A WPL9	0.20 max	0.40 1.06	-	0.030	0.030	-	1.60 2.24	-	Cu-0.75-1.25	435-610	315	20	17.6/13.6 (-75)
A WPL3	0.20 max	0.31 0.64	0.13 0.37	0.05	0.05	-	3.18 3.82	-	-	450-620	240	22	17.6/13.6 (-100)
A WPL8	0.13 max	0.90 max	0.13 0.37	0.030	0.030	-	8.40 9.60	-	-	690-865	515	16	33.9/27.1 (-195)



ROUND BARS



STAINLESS STEEL: 347, 310, 303, 304/304H, 316/316L, 317/317L, 17/4ph, 410, 431, Nitronic 50, Nitronic 60, Nimonic 80A

DUPLEX & SUPER DUPLEX: UNS S31803, UNS S32750, UNS S32760, UNS S32550, 254SMO

HASTELLOY ALLOYS: Hastelloy C4, Hastelloy B2, Hastelloy G30, Hastelloy B3, Hastelloy C276, Hastelloy X, Hastelloy C22

INCOLOY ALLOYS: Incoloy Alloy 20, Incoloy Alloy 800, Incoloy Alloy 800HT, Incoloy Alloy 825, Incoloy Alloy 925, Incoloy Alloy 286

INCONEL ALLOYS: Inconel Alloy 600, Inconel Alloy 601, Inconel Alloy 625, Inconel Alloy 718, Inconel Alloy 725, Inconel Alloy X750

MONEL ALLOYS: Monel 400, Monel R405, Monel K500

TYPE: Round/Square / Hexagonal / Rectangular

- STAINLESS STEEL & DUPLEX PIPE
- NICKEL ALLOY
- CARBON - NICKEL ALLOY

ANSI B36.10 Carbon Steel, Seamless Pipe Weight Per Kg/mtr.

Nominal Pipe Size	O/D	Schedule 10		Schedule 20		Schedule 30		Schedule STD		Schedule 40		Schedule 60		Schedule Extra Strong (XS)		Schedule 80		Schedule 100		Schedule 120		Schedule 140		Schedule 160		Schedule Extra Strong (XXS)			
		mm	inch	mm	kg/m	mm	kg/m	mm	kg/m	wall	wt.	wall	wt.	wall	wt.	wall	wt.	wall	wt.	wall	wt.	wall	wt.	wall	wt.	wall	wt.	wall	wt.
3	1/8	10.3	-	-	-	-	-	-	1.73	0.37	1.73	0.37	-	-	2.41	0.47	2.41	0.47	-	-	-	-	-	-	-	-	-	-	
6	1/4	13.7	-	-	-	-	-	-	2.24	0.63	2.24	0.63	-	-	3.02	0.8	3.02	0.8	-	-	-	-	-	-	-	-	-	-	
10	3/8	17.1	-	-	-	-	-	-	2.31	0.84	2.31	0.84	-	-	3.2	1.1	3.2	1.1	-	-	-	-	-	-	-	-	-	-	
15	1/2	21.3	-	-	-	-	-	-	2.77	1.27	2.77	1.27	-	-	3.73	1.62	3.73	1.62	-	-	-	-	-	-	4.78	1.95	7.5	2.55	
20	3/4	26.7	-	-	-	-	-	-	2.87	1.69	2.87	1.69	-	-	3.91	2.2	3.91	2.2	-	-	-	-	-	-	5.56	2.9	7.82	3.64	
25	1	33.4	-	-	-	-	-	-	3.38	2.5	3.38	2.5	-	-	4.55	3.24	4.55	3.24	-	-	-	-	-	-	6.35	4.24	9.1	5.45	
32	1 1/4	42.2	-	-	-	-	-	-	3.56	3.39	3.56	3.39	-	-	4.85	4.47	4.85	4.47	-	-	-	-	-	-	6.35	5.61	9.7	7.77	
40	1 1/2	48.3	-	-	-	-	-	-	3.68	4.05	3.68	4.05	-	-	5.08	5.41	5.08	5.41	-	-	-	-	-	-	7.14	7.25	10.2	9.56	
50	2	60.3	-	-	-	-	-	-	3.91	5.44	3.91	5.44	-	-	5.54	7.48	5.54	7.48	-	-	-	-	-	-	8.74	11.11	11.1	13.4	
65	2 1/2	73.0	-	-	-	-	-	-	5.16	8.63	5.16	8.63	-	-	7.01	11.41	7.01	11.41	-	-	-	-	-	-	9.53	14.92	14	20.4	
80	3	88.9	-	-	-	-	-	-	5.49	11.3	5.49	11.3	-	-	7.62	15.3	7.62	15.3	-	-	-	-	-	-	11.13	21.35	15.24	27.7	
90	3 1/2	101.6	-	-	-	-	-	-	5.71	13.57	5.71	13.57	-	-	8.08	18.63	8.08	18.63	-	-	-	-	-	-	-	-	-	-	
100	4	114.3	-	-	-	-	-	-	6.02	16.07	6.02	16.07	-	-	8.56	22.3	8.56	22.3	-	-	11.13	28.32	-	-	13.5	33.5	17.12	41.03	
125	5	141.3	-	-	-	-	-	-	6.55	21.77	6.55	21.77	-	-	9.53	30.9	9.53	30.9	-	-	12.7	40.2	-	-	15.09	49.11	19	57.4	
150	6	168.3	-	-	-	-	-	-	7.11	28.26	7.11	28.26	-	10.31	10.97	42.5	10.97	42.5	-	-	14.3	54.2	-	-	18.3	67.5	21.95	79.22	
200	8	219.1	-	-	6.35	33.3	7	36.8	8.18	42.5	8.18	42.5	10.31	12.7	12.7	64.6	12.7	64.5	15.1	75.92	18.3	90.4	20.6	100.9	23	111.27	22.23	108	
250	10	273.0	-	-	6.35	41.7	7.8	51.3	9.27	60.3	9.27	60.3	12.7	14.27	12.7	81.5	15.1	96	18.3	114.7	21.44	133	25.4	155	28.6	172.3	25.4	155	
300	12	323.8	-	-	6.35	49.7	8.4	65.2	9.53	73.8	10.31	79.7	14.27	15.09	12.7	97.4	17.5	132	21.4	160	25.4	187	28.6	208	33.3	238.7	25.4	187	
350	14	355.6	6.35	54.7	7.92	68.1	9.53	81.3	9.53	81.3	11.13	94.6	15.09	16.66	12.7	107	19	158	23.8	195	27.8	224	31.8	253.5	35.7	281	-	-	
400	16	406.4	6.35	62.6	7.92	77.9	9.53	93.3	9.53	93.3	12.7	123	16.66	19.05	12.7	123	21.44	203	26.2	245	30.9	286	36.53	333	40.5	366	-	-	
450	18	457.2	6.35	70.6	7.92	87.7	11.13	122	9.53	105	14.2	156	19.05	20.62	12.7	139	23.8	254.6	29.36	310	34	363	39.7	406.3	45.2	459	-	-	
500	20	508.0	6.35	78.5	9.53	117.2	12.7	155.1	9.53	117.2	15.09	183	20.62	22.2	12.7	155.1	26.2	311	32.5	381	38.1	441	44.4	508	50	564	-	-	
550	22	558.8	6.35	86.6	9.53	129	12.7	171	9.53	129	-	-	22.2	24.61	12.7	171	28.6	373	34.9	451	41.3	527	47.6	600	54	672	-	-	
600	24	610.0	6.35	94.5	9.53	141	14.3	210	9.53	141	17.48	255	24.61	-	12.7	187	30.9	442	38.8	547.7	46	640	52.4	720.15	59.5	808.22	-	-	
650	26	660.0	7.92	127.3	12.7	203	-	-	9.53	153	-	-	-	-	12.7	202	-	-	-	-	-	-	-	-	-	-	-	-	-
700	28	711.0	7.92	137.4	12.7	218	15.88	272	9.53	164	-	-	-	-	12.7	218	-	-	-	-	-	-	-	-	-	-	-	-	-
750	30	762.0	7.92	147.9	12.7	234.6	15.88	292.18	9.53	176	-	-	-	-	12.7	234	-	-	-	-	-	-	-	-	-	-	-	-	-
800	32	812.8	7.92	157.9	12.7	250.6	15.88	312	9.53	188.2	17.48	342	-	-	12.7	251	-	-	-	-	-	-	-	-	-	-	-	-	-
850	34	863.6	7.92	167.9	12.7	266.5	15.88	331.7	9.53	200	17.48	364.9	-	-	12.7	266	-	-	-	-	-	-	-	-	-	-	-	-	-
900	36	914.4	7.92	176.9	12.7	282.4	15.88	352.2	9.53	212	19.05	420.6	-	-	12.7	282	-	-	-	-	-	-	-	-	-	-	-	-	-

Formula - Pipe Weight Kg/Mtr. (OD - Thick x Thick x 0.02466 = Kg-Per Mtr.)

We also supply pipes

A335 P 5, A 106 Gr B, API - 5L - GrB, A 333 Gr



FLANGES



- **Stainless Steel Alloy**
- **Nickel Alloy**
- **Carbon Nickel - Alloy**

Stainless Steel:	ASTM A182, F304, 304L, 304H, 316 316L, 3107 317L, 321, 310, 347, 904L
Carbon Steel :	ASTM A105, A694 F42, A350, Lf2
Duplex & Super Duplex:	UNS S31803, UNS S32750, UNS S32760
Hastelloy Alloy :	ASTM B564 Hastelloy B2, C276, C22
Incolony Alloys :	ASTM B564 Alloy 20, Alloy A286 Alloy 800H/800HT, Alloy 825
Inconel Alloys:	ASTM B564 Alloy 600, Alloy 601, Alloy 625, Alloy 718, Alloy 725,
Monel Alloys :	ASTM B564 Monel 400, Monel K500
Alloy Steel :	ASTM A182 F1, F5, F9, F11, F22, F91
Size :	1/2*NB TO 72* NB
Class :	150#, 300#, 600#, 900#, 1500#, & 2500#

TYPE

- SLIP-ON FLANGE
- LAP JOINT FLANGE
- WELDNECK FLANGE
- ORIFACE FLANGE
- LONG WELD NECK FLANGE
- TABLE FLANGES (D, E, F, H TABLE)
- THREADED FLANGE
- SOCKETWELD FLANGE
- BLIND FLANGE (DUMMY FLANGE)
- RTJ FLANGE

Salient Features:

- Server vibration under impulse pressure
- Static Pressure High Tolerance • Dimensional preciness
- Corrosion resistance • Fast Performance • Long service life
- Perfect installation & application Study construction

Stainless Steel: 347, 310, 303, 304/304H, 316/316L, 317 /317L, 17/4PH, 410, 431 Nitronic 60, Nimonic 80A

Carbon Steel: 4.6, 8.8, 10.9, 12.9

Duplex & Super Duplex: UNS S31803, UNS S32750, UNS S32760 UNS \$32550, 2545MO

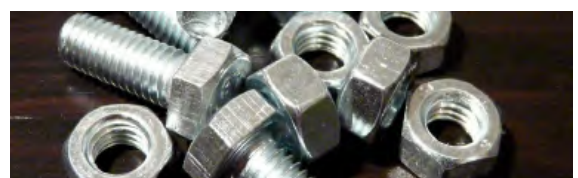
Hastelloy Alloy : Hastelloy C4, Hastelloy B2, Hastelloy G30, Hastelloy B3, Hastelloy C276, Hastelloy X, Hastelloy C22

Incolony Alloys: Incolony Alloy 20, Incolony Alloy 800, Incolony Alloy 800H/800HT, Incolony Alloy 825, Incolony Alloy 925, Incolony, Alloy A286

Inconel Alloys: Inconel Alloy 600, Inconel Alloy 601, Inconel Alloy 625, Inconel Alloy 718 Inconel Alloy 725, Inconel Alloy X750

Monel Alloys: Monel 400, Monel R405, Monel K500

FASTNERS



TYPE : Anchor Fastners, Stud Bolts, Hex Head Bolts, Threaded Rods, Socket caps screw, Countersunk Bolts, Hex nuts flex / Spring / Lock washers, Eye Bolts, Foundation Bolts



BUTTWELD FITTING



Stainless Steel:	ASTM A403, WP304, 304L, 304H, 316, 316L, 317, 317L, 321, 310, 347, 904L
Carbon Steel :	ASTM A105, A694 F42, A350, Lf2
Alloy Steel :	ASTM A234WP1, WP5, WP9, WP11, WP22
Duplex & Super Duplex :	UNS S31803, UNS S32750, UNS S32760,
Hastelloy Alloy :	ASTM B366 Hastelloy B2, Hastelloy C276, Hastelloy C22
Incoloy Alloys :	ASTM B366 Alloy 20, Alloy 800/800HT, Alloy 825, Alloy A286
Inconel Alloys:	ASTM B564 Monel 400, Monel K500
Size :	1/4" NB TO 24 NB (seamless) 4* NB TO 72" (welded)
Wall Thickness:	Sch. 5s To Sch. XXS

TYPE

- TEE (EQUAL/UNEQUAL)
- REDUCING TEE
- SHORT STUB BEND
- RETURN BENDS
- ELBOW (ID/1.5D/3D/5D)
- LONG STUB BEND
- REDUCER (CONCENTRIC/ECCENTRIC)
- MITER BENDS



SOCKETWELD FITTINGS

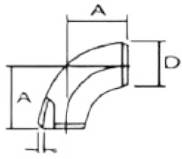
Stainless Steel:	ASTM A182, F304, 304L, 304H, 316, 316L, 317, 317L, 321, 310, 347, 904L
Carbon Steel:	ASTM A105, A694 F42, A350 LF2
High Nickel:	Monel, Nickel, Inconel, Hastelloy
Alloy Steel:	ASTM A182 FI, F5, F9, F11, F22, F91
Size :	1/4*NB TO 4* NB
Class :	3000#, 6000#, 9000#



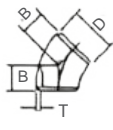
- STAINLESS STEEL & DUPLEX PIPE
- NICKEL ALLOY & COPPER NICKEL ALLOY
- CARBON STEEL & ALLOY STEEL.

Types: Elbow, Tee, Union, Cross, Coup Bushing, Plug Swage Nipple, Welding Boss, Hexagon Nipple, Barrel Nipple, Welding Nipple, Parraler Nipple, Street Elbow, Hexagon Nut, Hose Nipple, Bend, Adapter, Insert, Weldolet, Elbowlet, Sockolet, Thredolet, Nipolet, Letrolet, etc.

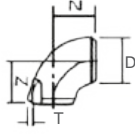




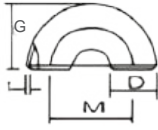
90° Elbow long radius



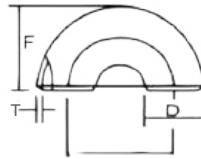
45° Elbow



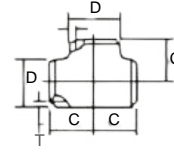
90° Elbow short radius



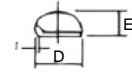
180° Return Bend short radius



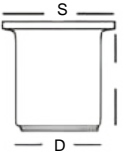
180° Return Bend Long radius



Tee equal



Caps



Stubend

Nominal Pipe Size		O/D	Center To Face				Back to Face			Center to Center			Lenght ' L '	
inch.	mm	D	A	B	C	N	E	F	G	R	M	S	MSS SP43	ANSI B 16.9
1/2	15	21.3	38	16	25	-	25	48	-	76	-	-	50.8	76.2
3/4	20	26.7	29	11	29	-	25	43	-	57	-	-	50.8	76.2
1	25	33.4	38	22	38	25	38	56	41	76	51	34.9	50.8	101.6
1 1/4	32	42.2	48	25	48	32	38	70	52	144	64	42.8	50.8	101.6
1 1/2	40	48.3	57	29	57	38	38	83	62	95	78	50.8	50.8	101.6
2	50	60.3	76	35	64	51	38	106	81	152	102	63.5	63.5	152.4
2 1/2	65	73.0	95	44	76	64	38	132	100	191	127	92.0	63.5	152.4
3	80	88.9	114	51	89	76	51	159	121	229	152	104.8	63.5	152.4
3 1/2	90	101.6	133	57	95	89	64	184	140	267	178	127.0	76.2	152.4
4	100	114.3	152	64	105	102	64	210	159	305	203	157.2	76.2	152.4
5	125	141.3	190	79	124	127	76	262	197	381	254	185.7	76.2	203.2
6	150	168.3	229	95	143	152	89	313	237	457	305	139.7	88.9	203.2
8	200	219.1	305	127	178	203	102	414	313	610	406	215.9	101.6	203.2
10	250	273.1	381	159	216	254	127	518	391	762	508	270.0	127.0	254.0
12	300	323.9	457	190	254	305	152	619	467	914	610	324.0	152.4	254.0
14	350	355.6	533	222	279	356	165	711	533	1067	711	318.0	152.4	254.0
16	400	406.4	610	254	305	406	178	813	610	1219	813	412.0	152.4	254.0
18	450	457.2	689	286	343	457	203	914	686	1372	914	533.4	152.4	254.0
20	500	508.0	762	318	381	508	229	1016	762	1524	1016	584.2	152.4	254.0
22	550	559.0	838	343	419	559	254	1118	838	1676	1118	614.4	152.4	254.0
24	600	610.0	914	381	432	610	267	1219	914	1829	1219	692.2	152.4	254.0
26	650	660.0	991	406	495	660	267	-	-	-	-	-	-	-
28	700	711.0	1067	438	521	711	267	-	-	-	-	-	-	-
30	750	762.0	1143	470	559	762	267	-	-	-	-	-	-	-
32	800	813.0	1219	502	597	813	267	-	-	-	-	-	-	-
34	850	864.0	1295	533	635	864	267							
36	900	914.0	1372	565	673	914	267							
38	950	965.0	1448	600	711	965	305							
40	1000	1016.0	1524	632	749	1016	305							
42	1050	1067.0	1600	660	762	1067	305							
44	1100	1118.0	1676	695	813	1118	343							
46	1500	1168.0	1753	727	851	1168	343							
48	1200	1219.0	1829	759	889	1219	343							





PRODUCT RANGE

Stainless Steel: ASTM A182 F304/304L/304H/316/316L/317/317L0/321/310/347/904L Etc

Carbon Steel: ASTM A105/A695 F42/46/52/56/60/65/70/A350 LF3/A350 LF2

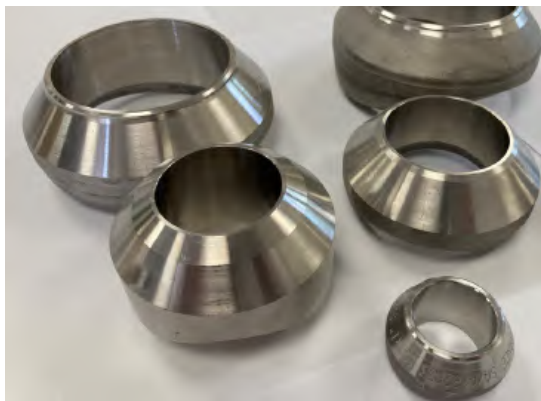
Alloy Steel: ASTM A182 F1/F5/F9/F1/F22/F91 Etc.

Duplex & Super Duplex Steel: UNS S31803, UNS S32750, UNS S32760

Other Alloys: Monel, Nickel, Inconel, Hastelloy, Copper, Brass, Bronze, Titanium, Alloy 20 Etc.

Types: Nipples, Adaptors, Crosses, Union Ball Joints, Reducing Bushing, Reducers, Pipe Caps, Couplings, Pipe Plug, Hollow Hex Plug, Elbow. Reducing Union, 90 Deg. Union Elbow, Reducing 90 Deg. Union Elbow Etc. Extender Leg 90 Deg. Union Elbow, 45 Deg. Union Elbow, Union Tee, Female Connector, Male Connector, Manifold Tee, Locator Union, Extended Run Leg Union Tee, Reducing Tee, Tribow, ATW Weld Ring, Tube Socket weld To Pipe Butt Weld, Tube Butt Weld To Tube Socket Weld, Port Connector Etc.

FERRULA FITTINGS



OLETS

Elements: Nippolet, Elbowlet, Letrolet, Sockolet & Weldolet, Thredolet

Stainless Steel: ASTM A-182, F304L, 316L, 310, 9041

Carbon: ASTM A105

Size: B/W Standard & Extra Long 1/8" To 24", Sch.160 1/2" To 6" 3000# Threaded And S/W 1/8" to 4", 6000# Threaded and S/W 1/2" To 2

Rating: 3000# (for Small Bore Branches)

Ends: Nippolet: Plain End, Sockolet: S/W End,

Weldolet & Elbowlet: B/W, Letrolet: S/W, B/W (as Per Branch Size)

Grade: Duplex, Super Duplex Inconel, Monel, Hastelloy C, Nickel Alloy, Alloy 20 Etc.

Dim Standard: MSS-SP-97

Copper: DHP Copper, ETP Copper, DPA Copper OFHC Copper

Brass: 63/37 Brass, 70/30 Brass Admiralty Brass, Aluminium Brass & Other Compositions of Brass

CUPRONICKEL: 95/5 alloy, 90/10 alloy & 70/30 alloy.

BRONZES: Phosphorous Bronze Aluminium Bronze & Gun Metal, Phosphorous Bronze A B1/ A B2 Bush Round

TUBES: 2mm OD to 200mm OD with Wall thickness of 0.10 mm to 15 mm in length upto 10 mtrs straight (in colls upto 25 mtrs) in copper, Brass & Curpronickel.

RODS: In all size upto 160mm diameter in Copper, Brass and Bronzes.

STRIPS/PROFILES: Copper Strips and Sections as per clients specific requirement

WIRES: Copper wires upto 42 swg in bright annealed condition.

S.E. WIRES: Super enamelled copper wires upto 42 swg.

SPECIFICATIONS

Indian Standard Specification (ISS)

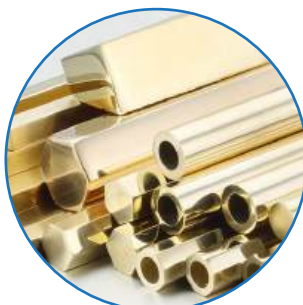
British Standard Specification (BSS)

American Standard for Testing of Material (ASTM)

As per Parties Specific Specification.



BRASS TUBES & RODS



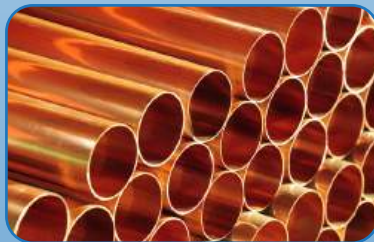
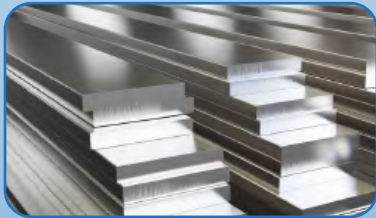
COPPER TUBES & SECTIONS





APPLICATION INDUSTRIES

- ▶ Oil & Gas Industries
- ▶ Engines & Railways
- ▶ Military
- ▶ Material Handling Stores
- ▶ Oil Mill Plants
- ▶ Refineries
- ▶ Chemical Machinery
- ▶ Paint Industries
- ▶ Car Care Systems
- ▶ Life Sciences
- ▶ Marine Project
- ▶ Automation Machinery
- ▶ Multi Parking Systems
- ▶ Fire & Safety Industries
- ▶ Power Generations System
- ▶ Cement Industry Machinery
- ▶ Offshore Engineering
- ▶ Hydrostatic Drive Systems
- ▶ Hydrostatic Press & Power Packs
- ▶ Cooling & Heating Systems
- ▶ Packaging Equipments
- ▶ Pollution Control Equipments
- ▶ Pulp Paper Machinery
- ▶ Fuel Cells Components
- ▶ Machine Tool Application
- ▶ Industrial Mining Equipment
- ▶ Food & Beverage Equipments
- ▶ Analyzer-lab & Testing Equipments
- ▶ Automobile & Heavy Mobile Vehicle
- ▶ Agriculture Machine Equipments
- ▶ Super Market Storage & Rack System
- ▶ Aerospace & Aircraft System
- ▶ Motion & Control Tech. Equipment
- ▶ Steel Plant & Rolling Mikks Mfg
- ▶ Plastic / Rubber Processing Machines





Certificate of Registration

This is to Certify that the
Quality Management System of

“RICH STEEL (INDIA)”

OFFICE:- SHOP NO. 3 (UPPER), PATEL MANSION, 4 TH KUMBHARWADA CORNER,
210, S.V.P. ROAD, MUMBAI – 400004, MAHARASHTRA, INDIA.

Has been independently assessed and is compliant with the requirements of

ISO 9001:2015

This Certificate is applicable to the following product or service ranges

STOCKIST & SUPPLIERS OF VARIOUS KINDS OF INDUSTRIAL &
COMMERCIAL RAW MATERIALS IN THE FORM OF STAINLESS STEEL,
CARBON STEEL, MILD STEEL, ALLOY STEEL AND NICKEL ALLOYS.

Validity of this certificate can be verified at www.utgec.com/verify



Certificate Number : IN411272025
Date of Initial Registration : 17/04/2025
1st Surveillance Due : 16/04/2026
2nd Surveillance Due : 16/04/2027
Certificate Expiry : 16/04/2028



Authorised Signatory

UT Global Edvance Certification Inc

www.utgec.com

This certificate can be verified at the above URL

The certificate remains the property of UT Global Edvance Certification Inc,
to whom it must be returned on request, Lack of fulfillment of certification terms
and conditions at all times, may render this certificate invalid.

CAB Address: 1401 Morris Road, Building 1, Suite 600, Alpharetta, GA 30004

CAB Website: www.euas-ac.org





RICH STEEL (INDIA)



These products are supplied to our Premium Customers.

